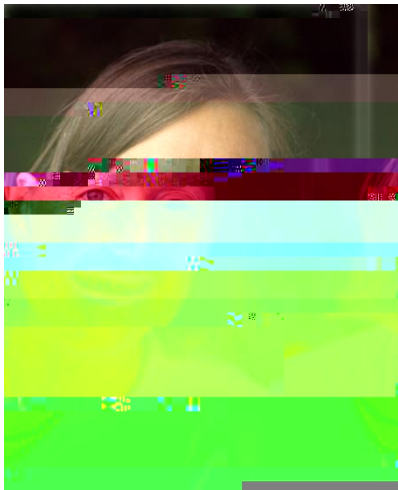




Get to know University Councillor Cathy Matthews



: B. Comm. (Honours) '86; Chair, Board of Directors, AMS '86; University Council '17-21, Judge, QEC '17, Board of Trustees '19-22

: CPA, CA, Ernst & Young; Managing Director, Investment Banking, TD Securities, Toronto, Vancouver, New York and London; Consultant, National Bank Financial; Founder, WealthTable

: Director, Camp Oochigeas; Director, New Haven Learning Centre; Director, Council for Human Development

: Executive Education: Harvard, London Business School & Wharton School; Human Development: Adler Centre & Neufeld Institute.

I wanted a well-regarded direct entry Canadian Commerce Program. Many of the counsellors from my years at summer camp were in 2nd/3rd year at Queen's. My uncle, a Queen's Alumnus was very encouraging.

No doubt a common alumni response would be meeting their residence roommate or floormates on the first day. This was certainly the case for me in meeting my roommate and discovering my childhood friend literally since birth, born the same day in the same hospital, was on our wing and floor at Vic Hall. Another memorable moment was my appointment as Chair of the Board of Directors, AMS. I had managed the AMS election campaign for a team that lost. Sometimes when you lose, you win, you just don't know it at the time.

3.

Upon graduation from Queen's, I worked at Clarkson Gordon and earned my certification as a CA. At the time, TD was building its securities business and I had the opportunity to join. I was very fortunate to be part of the growth of TD Securities in the decade that followed. I worked with wonderful peers and mentors in all major product groups including corporate finance, specializing in Canadian renewable energy, and in equity and debt capital markets, equity sales and credit derivatives. I have also worked as a strategy consultant and in product development in the financial services sector. Increasingly, I have been committing my time to advancing sustainable finance and ESG given the urgency of these issues.

Earth is hiring. Women are hiring. From an historical perspective, earth and women have arrived at their respective tipping points at more or less the same time. The urgency of these agendas has been compounded by C-19. As stated in the

of Directors, AMS. I was also motivated as a woman and mother of daughters to engage in leadership opportunities that capitalized on my professional experiences.

8.

Serving, as a Council Trustee on the Queen's Board of Trustees is a great honour as is my role as Board of Trustee's appointed Councillor to the University Council Executive Committee. In my capacity of Board Trustee, I am a Member of the Board of Trustee's Capital Assets and Finance Committee and the Board of Trustee's Investment Committee. I also serve on the Investment Committee's Energy Transition Sub-Committee and was a Member of the Board of Trustee's Climate Change Action Taskforce

9.

To continue my engagement with Queen's in hopes of making a meaningful contribution.

10.

?
We each have a unique set of experiences as incoming Councillors. My advice would be to draw on these areas of expertise in choosing a focus for making your individual contribution.

Connect with _____ on

