

Ont

Unresolved questions:

Are the algal blooms worse (in the north end of the lake) than they used to be?

Has the water quality changed?

i.e. have total phosphorus (TP) concentrations increased?

These questions involve lake wide processes and must be answered with lake wide monitoring programs

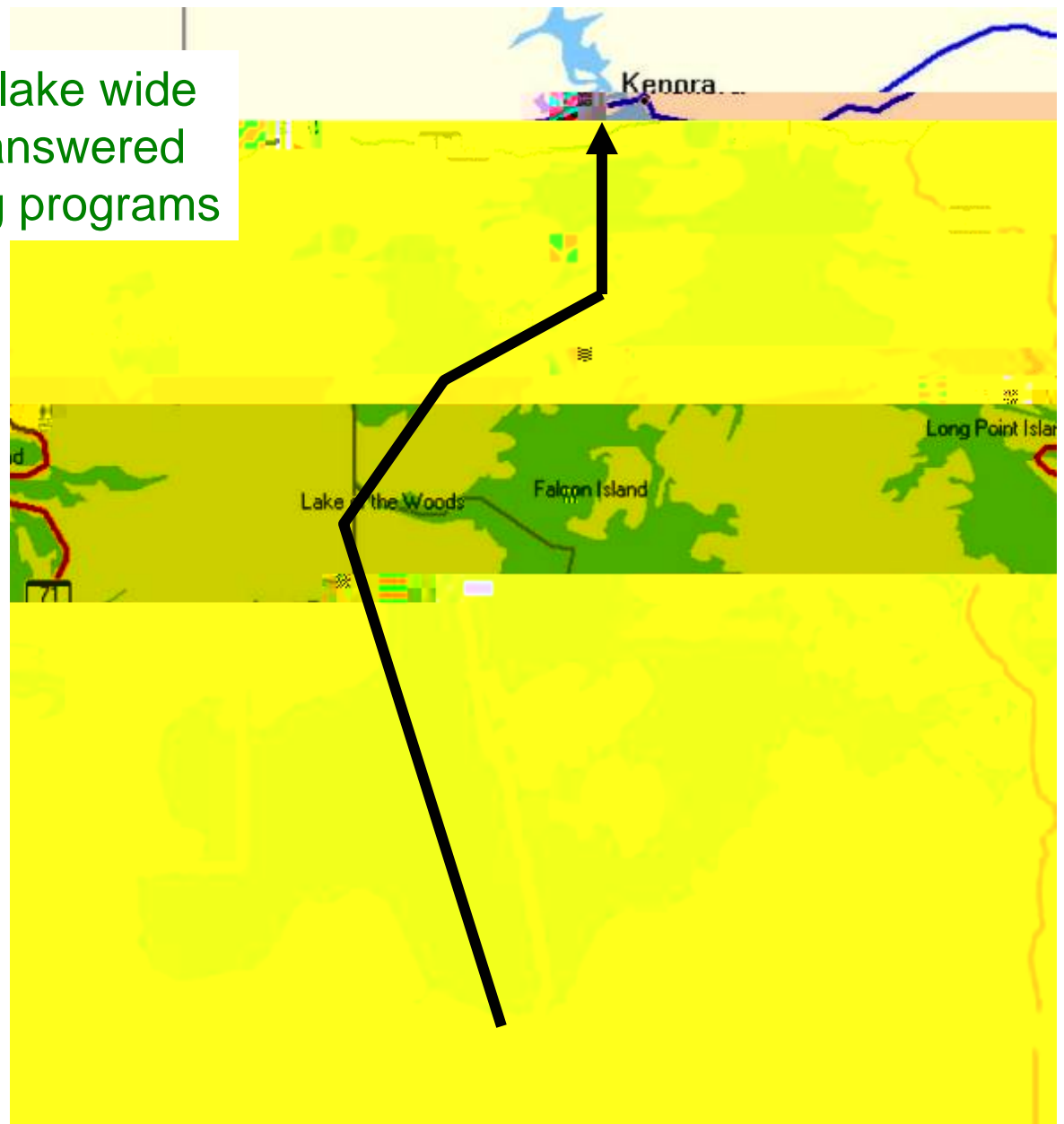


Figure 1. Lake of the Woods Rainy River (inflow) to Kenora (outflow).

Sample effort:

**Ministry of Natural
Resources – Kenora**

**Ministry of the
Environment – Dorset**

**Lake Partner Program
- volunteers**

Many data gaps:

- Not continuous at any one station
- Samples not seasonal

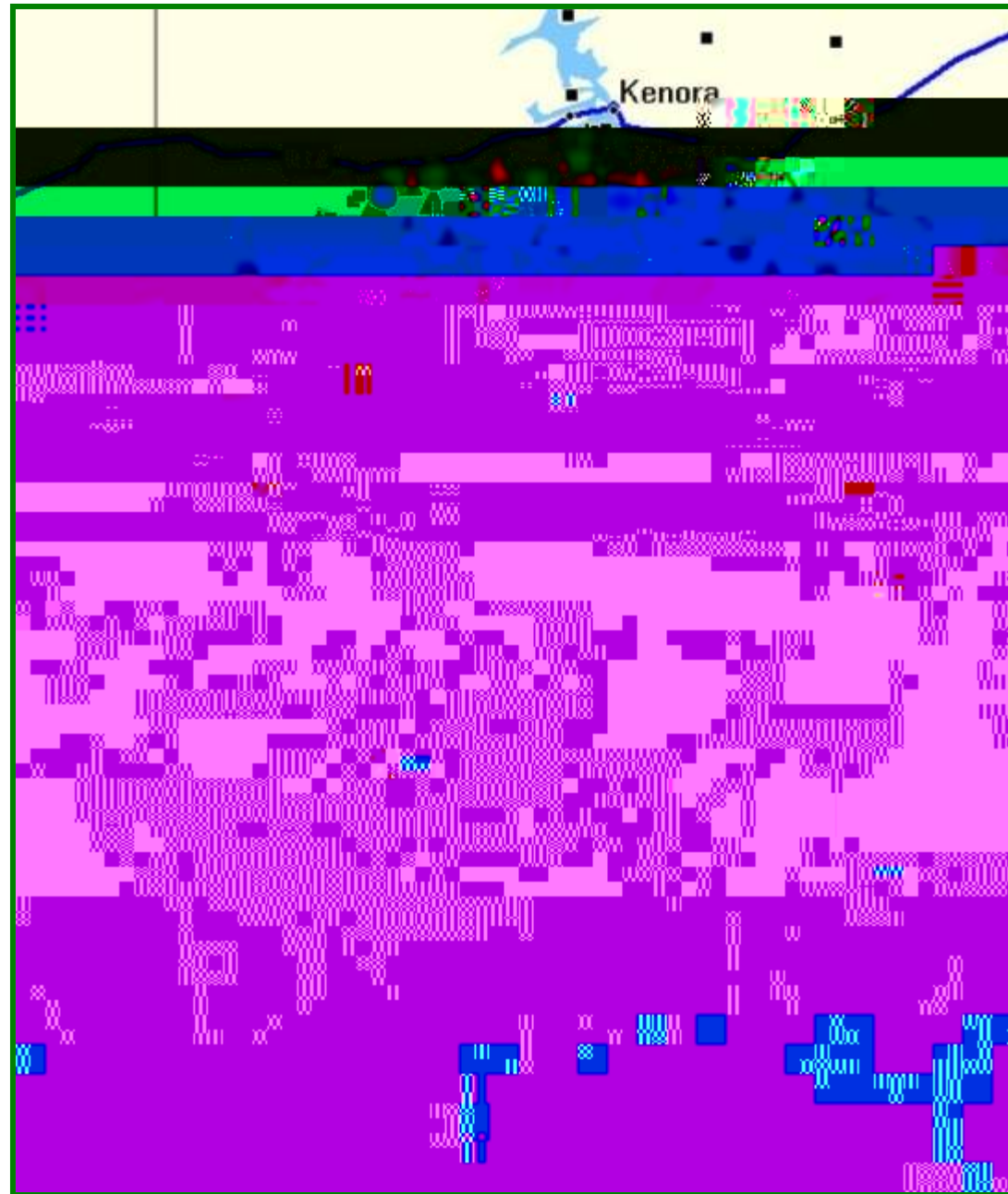
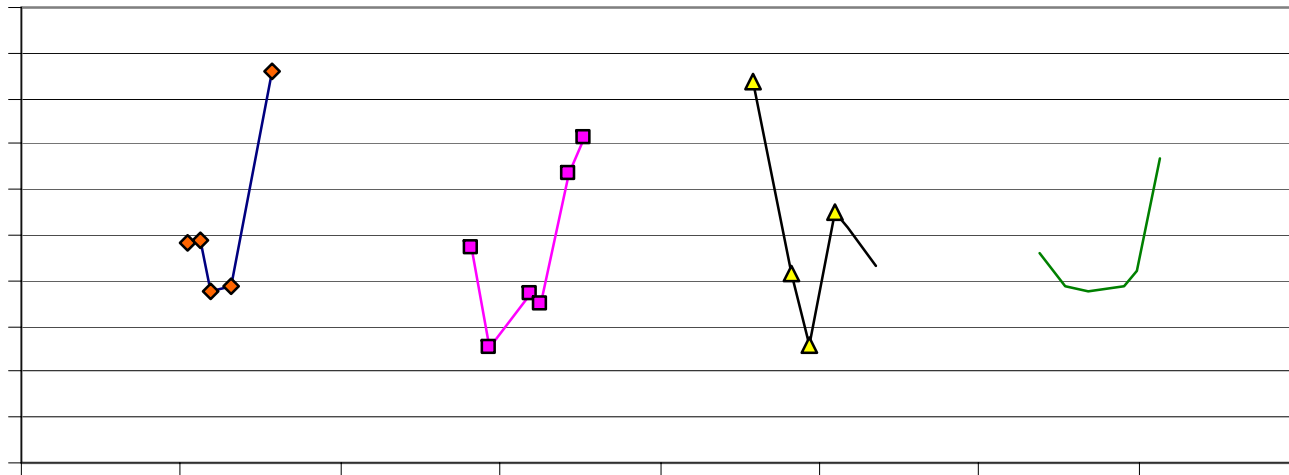


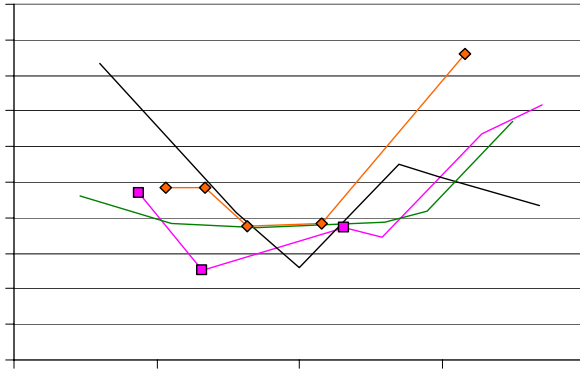
Figure 2. Sample locations in Lake of the Woods.

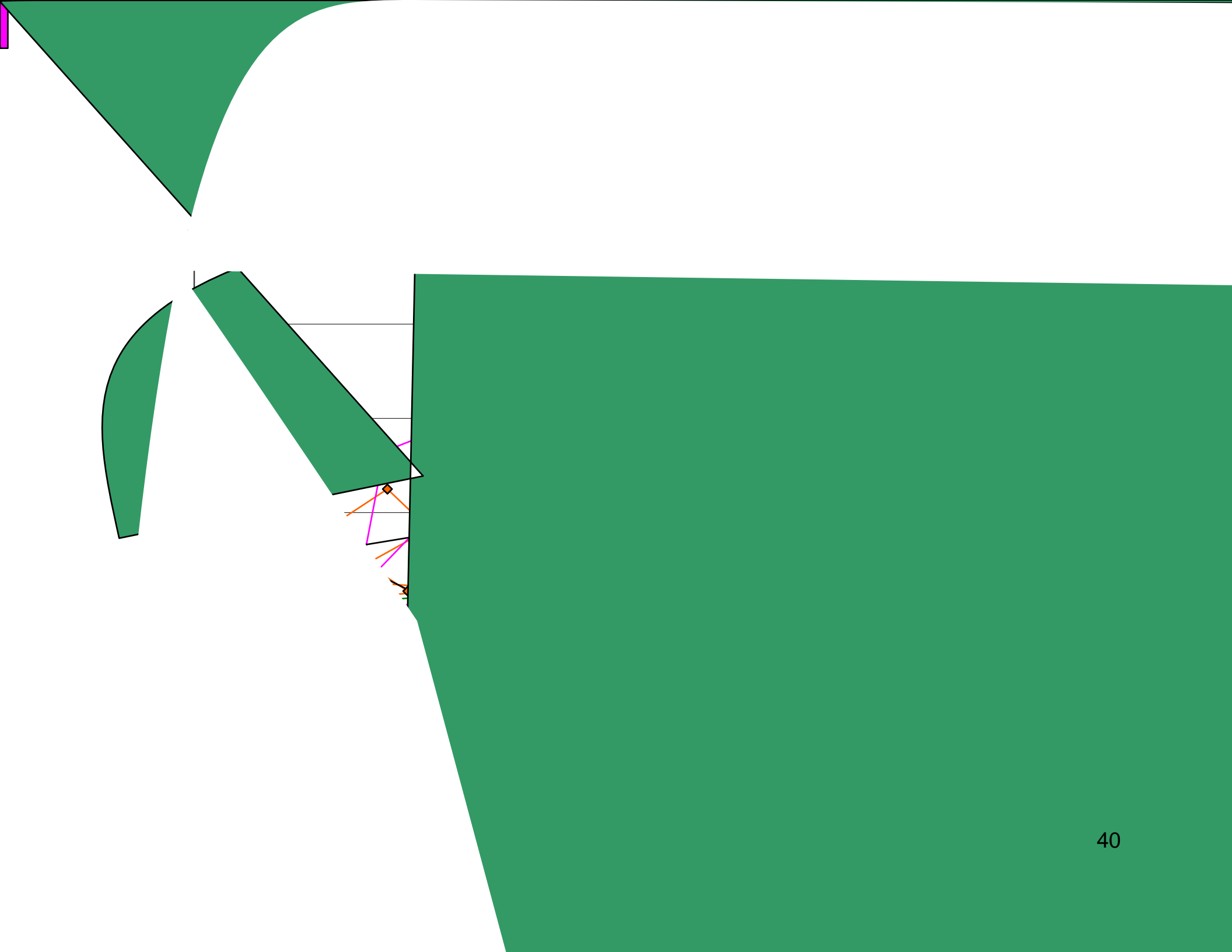
Seasonal TP fluctuations at all locations are tremendous.

This complicates the question; $100/100/24/2*0.18/100/28/2*0.11/14/2*0$



Seasonal patterns are similar between years and differ with location





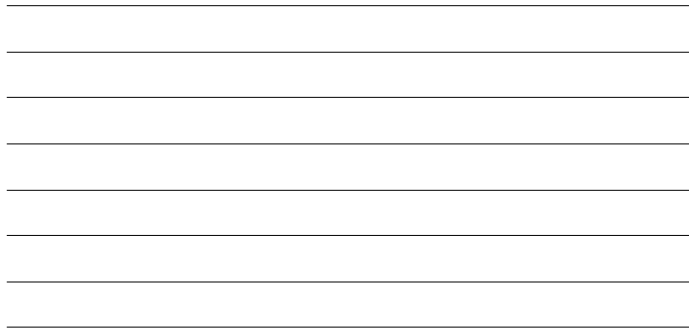


Figure 8. TP trends at East Allie Island and Bigstone Bay.

